

**RWE Renewables UK Dogger Bank
South (West) Limited**

**RWE Renewables UK Dogger Bank
South (East) Limited**

Dogger Bank South Offshore Wind Farms

Environmental Statement

Volume 7

Chapter 13 – Commercial Fisheries

Figure 13-1 to Figure 13-2 (Revision 2)

June 2025

Application Reference: 7.13.1

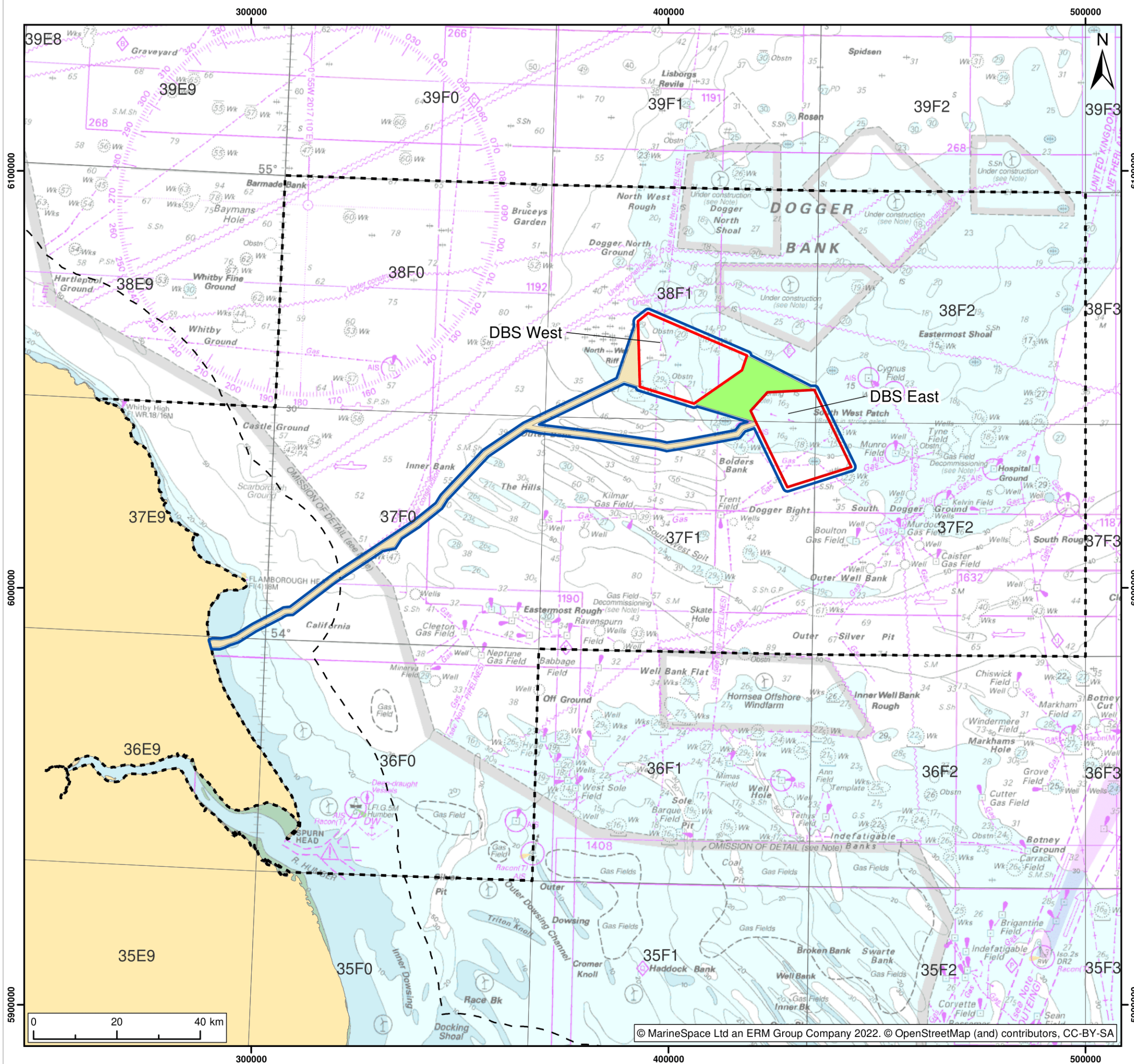
APFP Regulation: 5(2)(a)

Revision: 02

Unrestricted

Company:	RWE Renewables UK Dogger Bank South (West) Limited and RWE Renewables UK Dogger Bank South (East) Limited	Asset:	Development		
Project:	Dogger Bank South Offshore Wind Farms	Sub Project/Package:	Consents		
Document Title or Description:	Environmental Statement – Chapter 13 – Figure 13-1 to Figure 13-2 (Revision 2)				
Document Number:	004300154-02	Contractor Reference Number:	PC2340-RHD-OF-ZZ-RP-Z-0096		
<p><i>COPYRIGHT © RWE Renewables UK Dogger Bank South (West) Limited and RWE Renewables UK Dogger Bank South (East) Limited, 2025. All rights reserved.</i></p> <p><i>This document is supplied on and subject to the terms and conditions of the Contractual Agreement relating to this work, under which this document has been supplied, in particular:</i></p> <p>LIABILITY</p> <p><i>In preparation of this document RWE Renewables UK Dogger Bank South (West) Limited and RWE Renewables UK Dogger Bank South (East) Limited has made reasonable efforts to ensure that the content is accurate, up to date and complete for the purpose for which it was contracted. RWE Renewables UK Dogger Bank South (West) Limited and RWE Renewables UK Dogger Bank South (East) Limited makes no warranty as to the accuracy or completeness of material supplied by the client or their agent.</i></p> <p><i>Other than any liability on RWE Renewables UK Dogger Bank South (West) Limited and RWE Renewables UK Dogger Bank South (East) Limited detailed in the contracts between the parties for this work RWE Renewables UK Dogger Bank South (West) Limited and RWE Renewables UK Dogger Bank South (East) Limited shall have no liability for any loss, damage, injury, claim, expense, cost or other consequence arising as a result of use or reliance upon any information contained in or omitted from this document.</i></p> <p><i>Any persons intending to use this document should satisfy themselves as to its applicability for their intended purpose.</i></p> <p><i>The user of this document has the obligation to employ safe working practices for any activities referred to and to adopt specific practices appropriate to local conditions.</i></p>					
Rev No.	Date	Status/Reason for Issue	Author	Checked by	Approved by
01	June 2024	Final for DCO Application	MarineSpace	RWE	RWE
02	June 2025	Submission at Deadline 7	MarineSpace	RWE	RWE

Revision Change Log		
Rev No.	Figure	Description
01	N/A	Submitted for DCO Application
02	13-1	Chapter 13 – Commercial Fisheries Figure 13-1 to Figure 13-2 has been updated at the request of the Examining Authority within the Rule 17 [PD-018] to accurately reflect the proposed development and contains all the updated information within the figures as a result of Project Change Request 1 - Offshore & Intertidal Works [AS-141].



Legend:

- Array Areas
- Inter Platform Cabling Area
- Offshore Development Area
- Export Cable Corridor
- Commercial Fisheries Study Area
- UK 12 nm limit
- ICES Rectangles

S2	P02	23/03/2023	PC2340_MAR_OF_ZZ_DR_Z_0001	NB	AN	GLS
S2	P01	10/02/2023	PC2340_MAR_OF_ZZ_DR_Z_0001	AN	BO	GLS
SUI	REV	DATE	DESCRIPTION	DRW	CHK	APR

Title:
Commercial Fisheries Study Area

Figure:2.1.1 Drawing No: PC2340_MAR_OF_ZZ_DR_Z_0001

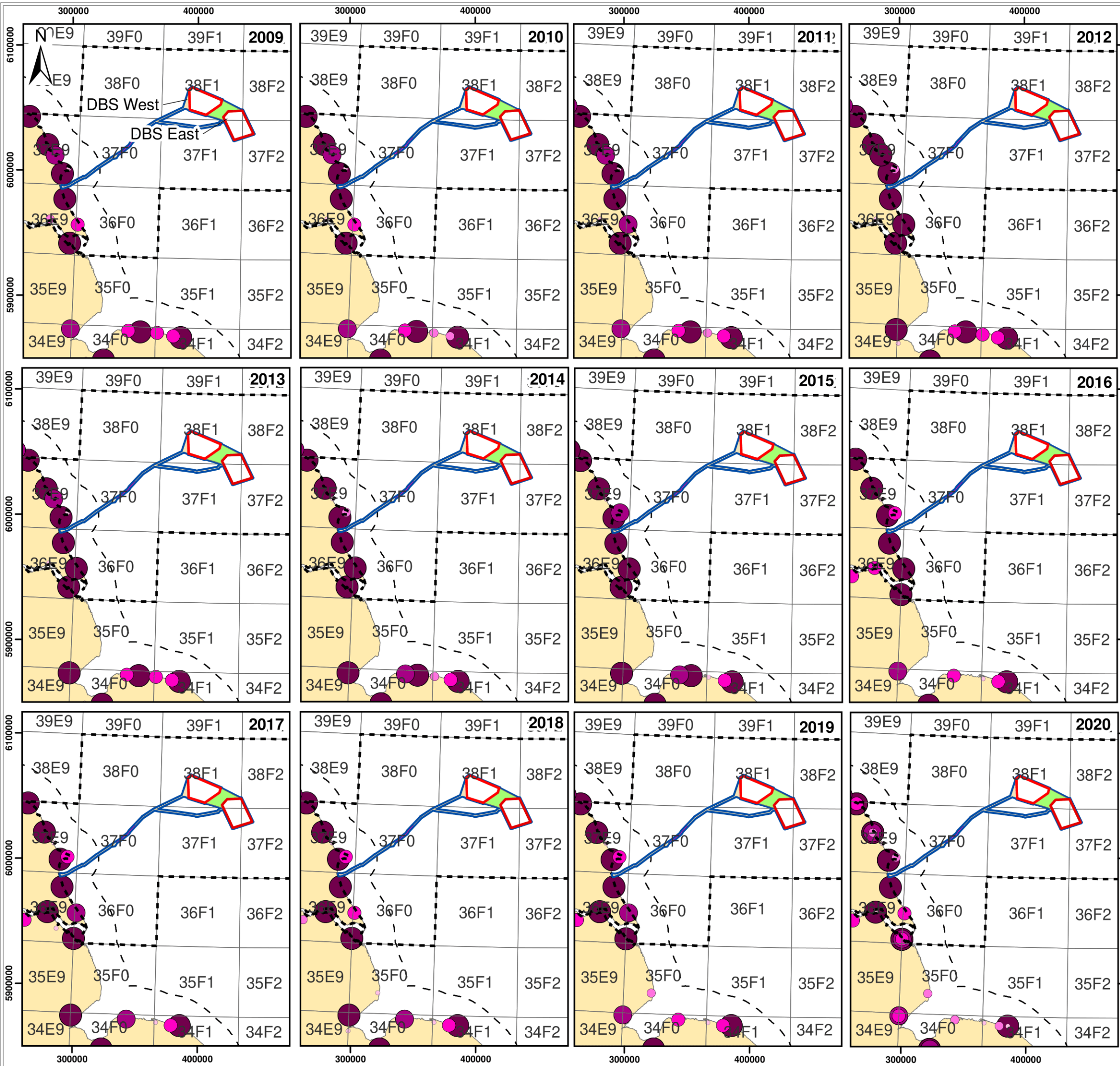
Co-ordinate system:
WGS 1984 UTM Zone 31N

Page Size:
A3

Scale:
1:907,129

Project:
**Dogger Bank South
Offshore Wind Farms**

Report:
**Dogger Bank South:
Environmental Statement**

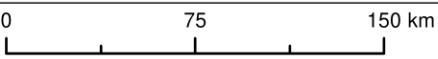


Legend:

- DBS East and DBS West Array
- Inter Platform Cable Corridor
- Offshore Development
- Export Cable Platform Search
- Offshore Export Cable Corridor
- Commercial Fisheries Study
- ICES Rectangles
- UK 12 nm limit

Fish landings to UK ports (kW days)

- 11 - 2,500
- 2,500 - 8,000
- 8,000 - 19,000
- 19,000 - 40,000
- > 40,000



S2	P03	10/01/2023	PC2340_MAR_MMO_OF_ZZ_DR_Z_0004	NB	BO	TM
S2	P02	10/01/2023	PC2340_MAR_MMO_OF_ZZ_DR_Z_0004	AN	BO	TM
S2	P01	28/11/2022	PC2340_MAR_MMO_OF_ZZ_DR_Z_0004	AN	BO	GLS
SUI	REV	DATE	DESCRIPTION	DRW	CHK	APR

Title:

Fishing effort by regional ports: 2009-2020

Figure: 13-2 Drawing No: PB2340-MAR-MMO-OF-ZZ-DR-Z-0004

Co-ordinate system: WGS 1984 UTM Zone 31N Page Size: A3 Scale: 1:3,000,000

Project: Dogger Bank South Offshore Wind Farms Report: Dogger Bank South: Environmental Statement

